



WARWICK

JUNE 2023 RELEASE

VANCE



ROMANTIC • WHIMSICAL • SOPHISTICATED • SUBTLE TEXTURE





VANCE

- GREEN CODE
- DUAL PURPOSE
- DRAPERY/HEAVY DOMESTIC/
GENERAL COMMERCIAL
- 100% POLYESTER
- HALO
- WASHABLE
- FIRE RATED- AS1530.2 &
AS1530.3
- OEKO-TEX
- ISO9001 CERTIFIED
- 3 COORDINATING DESIGNS
- 5 COLOUR GROUPS



Note: Bulk sampling due approx. mid-August

VANCE



ARNCLIFFE NATURAL



ARNCLIFFE MIST



ARNCLIFFE TEAL



ARNCLIFFE OCHRE



ARNCLIFFE BERRY



ARNCLIFFE GREY



ARNCLIFFE SKY



ARNCLIFFE NAVY



ARNCLIFFE TERRACOTTA



ARNCLIFFE LEMONGRASS



ODILIA NATURAL



ODILIA ICE



ODILIA NAVY



ODILIA AUTUMN



ODILIA FUSCHIA



VANCE NATURAL



VANCE ICE



VANCE NAVY



VANCE OCHRE



VANCE BERRY



WARWICK



TRADITIONAL BEAUTY WITH A WHIMSICAL TOUCH - VANCE by Warwick

Create a timeless, whimsical aesthetic with VANCE. Dual-purpose, VANCE is a modern interpretation of traditional patterns that will create endless looks. From sophisticated spaces, to relaxed coastal environments, VANCE is perfect for residential and general commercial interiors.

- **DESIGN:** In three transitional designs, VANCE is digitally printed on a neutral base cloth that embodies a linen-look slub for a textured and natural appearance. To create traditional and eclectic styles with a modern touch, ARNCLIFFE brings an ogee pattern; ODILIA is a classic Jacobean floral; while VANCE offers a timeless stripe.
- **APPLICATION:** Washable and dual-purpose with Oeko-Tex certification and Halo easy-clean benefits, VANCE is ideal for bringing classic yet whimsical style to an array of spaces. Fire rated to 1530.3 and 1530.2 standards, VANCE's versatility and quaint pattern is perfect for creating eclectic drapery, sophisticated sofas, and decorative cushions and lampshades.
- **COLOURWAYS:** VANCE offers five colour themes to create a myriad of styles and moods. Natural, Ice and Navy are classic, traditional tones - for a Hamptons look. Autumn offers a vintage look that pairs beautifully with Terracotta and Ochre, while Fuchsia brings a bright and fun option that can be combined with Berry and Lemongrass shades for a daring, yet fashionable style.
- **RATING:** Oeko-Tex certified with Halo easy-clean characteristics, VANCE is a dual-purpose, washable collection that is suitable for residential and general commercial applications. Fire rated to 1530.3 and 1530.2 standards and certified for quality management system ISO9001, VANCE's timeless designs allow for an array of looks to be created — from classic sophistication, to a relaxed Hamptons aesthetic.

SPECIFICATIONS			
DESIGN	USAGE	COMPOSITION	COLOUR CODE
ARNCLIFFE	Draperies / Heavy Domestic / General Commercial	100% Polyester	G/BL
ODILIA	Draperies / Heavy Domestic / General Commercial	100% Polyester	G/BL
VANCE	Draperies / Heavy Domestic / General Commercial	100% Polyester	G/BL

FR AS/NZS 1530.3*		FR AS/NZS 1530.2*	
IGNITABILITY	11	FLAMABILITY INDEX	1
SPREAD OF FLAME	0	SPREAD FACTOR	LENGTH: 0 WIDTH: 0
HEAT EVOLVED	1	HEAT FACTOR	LENGTH: 1 WIDTH: 1
SMOKE DEVELOPED	3		

*FR results are applicable to all three designs

For full test details please contact your Warwick Sales Consultant



For more information about
Warwick Fabrics call

Australia

Toll free 1300 787 888
www.warwick.com.au

New Zealand

+64 (0) 9 477 3080
www.warwick.co.nz

United Kingdom

+44 (0) 1451 822 383
www.warwick.co.uk



Warwick Fabrics © 2023 All rights reserved

FAIRHAVEN



RELAXED HAMPTONS STYLE • MIX & MATCH COLLECTION • DRY WEAVE





FAIRHAVEN

- YELLOW CODE
- UPHOLSTERY
- HEAVY COMMERCIAL
- 82,500+ MARTINDALE
- 100% POLYESTER
- HALO
- FIRE RATED
- OEKO TEX CERTIFIED
- 6 COORDINATING DESIGNS



FAIRHAVEN



FAIRHAVEN ALABASTER



FAIRHAVEN BLUSH



FAIRHAVEN CUSTARD



FAIRHAVEN SAGE



FAIRHAVEN NAVY



FAIRHAVEN CHARCOAL



ISLIP ALABASTER



ISLIP BLUSH



ISLIP CUSTARD



ISLIP SAGE



ISLIP NAVY



ISLIP CHARCOAL



CAMDEN ALABASTER



CAMDEN BLUSH



CAMDEN CUSTARD



CAMDEN SAGE



CAMDEN NAVY



CAMDEN CHARCOAL



SHOREHAM ALABASTER



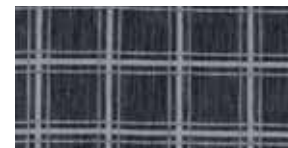
SHOREHAM BLUSH



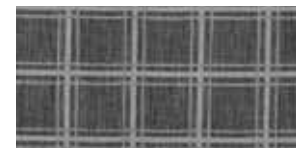
SHOREHAM CUSTARD



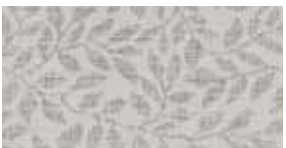
SHOREHAM SAGE



SHOREHAM NAVY



SHOREHAM CHARCOAL



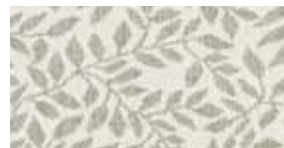
HEMPSTEAD ALABASTER



HEMPSTEAD BLUSH



HEMPSTEAD CUSTARD



HEMPSTEAD SAGE



HEMPSTEAD NAVY



HEMPSTEAD CHARCOAL



EMIR FAWN



EMIR ROUGE



EMIR CUSTARD



EMIR SAGE



EMIR NAVY



EMIR CHARCOAL



WARWICK



ELEGANT PATTERN FOR A RELAXED, COASTAL FEEL - FAIRHAVEN by Warwick

Bring the beauty of the seaside indoors with FAIRHAVEN. Casual and charming, FAIRHAVEN is a modern yet classic take on traditional Hamptons style that is bound to bring an elegant look to both residential and commercial settings.

- **DESIGN:** FAIRHAVEN features five timeless patterns that will create a relaxed coastal aesthetic. Yarn dyed for subtle tonal variation, FAIRHAVEN is jacquard woven and embodies a dry, textured finish with a subtle sheen. In this collection, CAMDEN offers a traditional, balanced stripe; SHOREHAM, a sophisticated check; HEMPSTEAD, a beautiful leaf scroll pattern; ISLIP, an elegant damask; FAIRHAVEN, a stylish Jacobean; and EMIR, a complementary, two-toned plain that pairs back effortlessly with each pattern.
- **APPLICATION:** Heavy Commercial and FR tested, FAIRHAVEN is perfect for bringing a relaxed style to both modern residential and commercial interiors. With the added benefit of Oeko-Tex certification and Halo easy-clean properties, FAIRHAVEN is ideal for upholstering elegant yet durable sofas, as well as timeless cushions and lampshades.
- **COLOURWAYS:** In six colourways, FAIRHAVEN offers a mixture of traditional hues alongside soft, summery tones to suit a myriad of spaces. Alabaster is a timeless, relaxing neutral, while Navy and Charcoal are deeper alternatives for a classic style. Sage and Blush give a subtle pop of colour, whereas Custard evokes a joyful mood.
- **RATING:** Oeko-Tex certified with Halo easy-clean benefits and an AS1530.3 fire rating, FAIRHAVEN is a versatile upholstery collection, suitable for commercial and residential applications. Classic yet stylish, FAIRHAVEN's timeless designs and colourways make this it for bringing a Hamptons feel, or a country house style with a sophisticated touch.

SPECIFICATIONS				FR AS 1530.3 INDEX RESULTS			
DESIGN	USAGE	COMPOSITION	COL CODE AUS/NZ	IGNITABILITY	SPREAD OF FLAME	HEAT EVOLVED	SMOKE DEVELOPED
CAMDEN	Heavy Commercial Martindale 82,500	100% Polyester	Y/G	12	0	3	5
EMIR	Heavy Commercial Martindale 90,000	100% Polyester	Y/G	12	0	3	4
FAIRHAVEN	Heavy Commercial Martindale 82,500	100% Polyester	Y/G	12	0	3	5
HEMPSTEAD	Heavy Commercial Martindale 82,500	100% Polyester	Y/G	12	0	3	5
ISLIP	Heavy Commercial Martindale 82,500	100% Polyester	Y/G	12	0	3	5
SHOREHAM	Heavy Commercial Martindale 82,500	100% Polyester	Y/G	12	0	3	5

For full test details please contact your Warwick Sales Consultant



For more information about Warwick Fabrics call

Australia

Toll free 1300 787 888
www.warwick.com.au

New Zealand

+64 (0) 9 477 3080
www.warwick.co.nz

United Kingdom

+44 (0) 1451 822 383
www.warwick.co.uk



Warwick Fabrics © 2023 All rights reserved

FLORENCIA



PAINTERLY • RELAXED FUN • ARTISTIC • WHIMSICAL • DRY FINISH





FLORENCIA

- BLUE CODE
- DUAL PURPOSE
- DRAPERY/HEAVY DOMESTIC/
GENERAL COMMERCIAL
- 100% COTTON
- NATURALLY
- OEKO-TEX
- COORDINATES WITH ORION
- 4 COLOURS



FLORENCIA



ORION GULL



FLORENCIA COBALT



ORION AZRUE



ORION ECRU



FLORENCIA SPRING



ORION CORAL



ORION THISTLE



FLORENCIA MARMALADE



ORION SKY



ORION DIJON



FLORENCIA MIDNIGHT



ORION CHARCOAL



WARWICK



CREATE A BLOOMING ENVIRONMENT WITH ARTISTIC FLORALS - FLORENCIA by Warwick

Be immersed in expressive florals that exude beauty with FLORENCIA. Warwick Naturally and dual purpose, FLORENCIA is a transitional collection of painterly blooms that brings vibrance and an artistic touch to modern residential and general commercial spaces, creating joyful, and whimsical moods to enliven interiors.

- **DESIGN:** Meaning 'blooming' or 'flowering' in Spanish, FLORENCIA is digitally printed on a 100% cotton base with a dry, textured finish. Bold and fun, this collection offers an authentic floral design that brings a colourful yet organic style, and pairs beautifully with its complementing plain: ORION, a timeless, chunky texture that brings sophistication and soft touch.
- **APPLICATION:** Dual-purpose and durable, FLORENCIA reflects the beauty found within flower gardens and is perfect for creating fresh and colourful environments. Oeko-Tex certified, FLORENCIA's expressive pattern makes this collection ideal for statement drapery, vivid sofas and ottomans, as well as decorative cushions and lampshades.
- **COLOURWAYS:** FLORENCIA offers four bold and punchy colourways that are bound to enliven any space, while pairing back easily with complementing tones of ORION. Perfect for brightening a room, Spring brings fresh, feminine tones of pink that contrast with a dusty blue and soft lemon, while Marmalade is a zestful orange with hues of muted purple and olive green for a summery feel. On the deeper side, Cobalt is a traditional, calming option which features a fresh blue and white chintz story, while Midnight is moody and theatrical where its dark onyx background allows its purple, orange, blue and green hues pop and appear livelier.
- **RATING:** Warwick Naturally with Oeko-Tex certification, FLORENCIA is a versatile dual-purpose collection that is suitable for general commercial and residential applications. Exuding radiance, FLORENCIA's impactful floral design and colourful palette allow for an array of moods and themes to be created — a must for those who want to bring the aesthetic of a flower garden indoors.

DESIGN	USAGE	COMPOSITION	COL CODE AUS/NZ
FLORENCIA	Drapery / Heavy Domestic / General Commercial	100% Cotton	BL/-
ORION	Drapery / Heavy Domestic / General Commercial	79% Cotton, 21% Polyester	BL/-

For full test details please contact your Warwick Sales Consultant



NATURALLY



For more information about
Warwick Fabrics call

Australia

Toll free 1300 787 888
www.warwick.com.au

New Zealand

+64 (0) 9 477 3080
www.warwick.co.nz

United Kingdom

+44 (0) 1451 822 383
www.warwick.co.uk



Warwick Fabrics © 2023 All rights reserved

FLEMINGTON



SMART • SOPHISTICATED • COMMERCIAL COLOURS • TWO COORDINATING PLAINS 



FLEMINGTON

- ORANGE CODE
- COORDINATING TEXTURES
FLEMINGTON & SYLVESTER
- UPHOLSTERY
- HEAVY COMMERCIAL
- 69,000+ MARTINDALE
- 100% POLYESTER
- HALO
- FIRE RATED AS1530.3
- 26 SKUS



FLEMINGTON



SYLVESTER WHITE



FLEMINGTON IVORY



SYLVESTER SAND



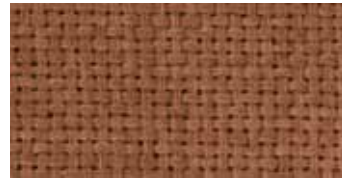
FLEMINGTON SAND



SYLVESTER TAUPE



FLEMINGTON TAUPE



SYLVESTER TERRACOTTA



FLEMINGTON TERRACOTTA



SYLVESTER BLUSH



FLEMINGTON BLUSH



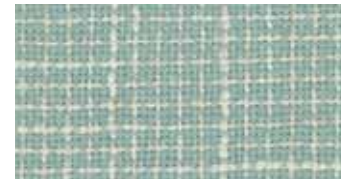
SYLVESTER DAFFODIL



FLEMINGTON DAFFODIL



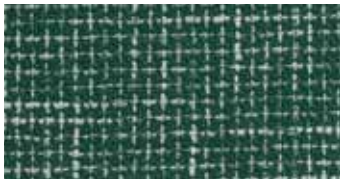
SYLVESTER SEAFOAM



FLEMINGTON SEAFOAM



SYLVESTER FOREST



FLEMINGTON FOREST



SYLVESTER ELECTRIC



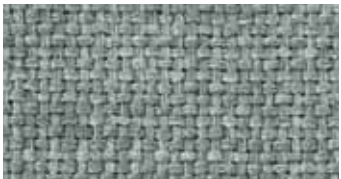
FLEMINGTON ELECTRIC



SYLVESTER MIDNIGHT



FLEMINGTON MIDNIGHT



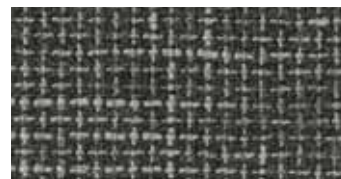
SYLVESTER GREY



FLEMINGTON GREY



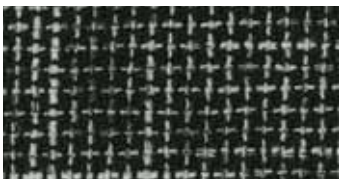
SYLVESTER STONE



FLEMINGTON STONE



SYLVESTER COAL



FLEMINGTON COAL



WARWICK



SOPHISTICATED, TEXTURAL DIMENSION – FLEMINGTON by Warwick

Bring sophistication and subtle texture to your space with FLEMINGTON. Versatile and stylish, FLEMINGTON is a collection of transitional woven plains that are fashionable and perfect for creating casual, modern residential and urban commercial spaces.

- **DESIGN:** Designed to coordinate together or pair back with patterned collections, FLEMINGTON offers two woven plain fabrics that bring varying textures and embody a dry finish. Yarn dyed with a needle punch backing, FLEMINGTON features a subtle check design that is ideal for creating contrast. Piece dyed with a non-woven backing, SYLVESTER is a solid plain that will complement an array of settings.
- **APPLICATION:** Heavy Commercial, FLEMINGTON is highly durable in nature and will provide a refined aesthetic to a myriad of interiors. With the added benefit of Halo easy-clean and an AS1530.3 fire rating, FLEMINGTON is bound to create sophisticated upholstery pieces, as well as cushions and lampshades, in both residential and high-traffic commercial spaces.
- **COLOURWAYS:** Featuring a palette of 13 colourways, FLEMINGTON offers a mixture of classic, colourful and on-trend hues for total optimisation and coordination. Ivory, Sand and Taupe are timeless neutrals that will suit any scheme, while Midnight, Terracotta, Blush and Forest bring fashion-forward shades that add extra depth to a space. For playful pops of colour, Electric, Daffodil and Seafoam will enliven and brighten any room.
- **RATING:** With Halo easy-clean properties, FLEMINGTON is a versatile and durable collection that will sit effortlessly in any modern residential or refined commercial space. Heavy Commercial and tested for an AS1530.3 fire rating, FLEMINGTON brings sophistication, subtle texture and visual appeal, making it a perfect range for a simple, yet stylish look and feel.



For more information about
Warwick Fabrics call

Australia

Toll free 1300 787 888
www.warwick.com.au

New Zealand

+64 (0) 9 477 3080
www.warwick.co.nz

United Kingdom

+44 (0) 1451 822 383
www.warwick.co.uk

SPECIFICATIONS				FR AS 1530.3 INDEX RESULTS			
DESIGN	USAGE	COMPOSITION	COL CODE AUS/NZ	IGNITABILITY	SPREAD OF FLAME	HEAT EVOLVED	SMOKE DEVELOPED
FLEMINGTON	Heavy Commercial Martindale 69,000	100% Polyester	O/O	12	0	1	5
SYLVESTER	Heavy Commercial Martindale 131,000	100% Polyester	O/O	11	0	1	5

For full test details please contact your Warwick Sales Consultant



Warwick Fabrics © 2023 All rights reserved

ATLAS



SOPHISTICATED • LUXURIOUSLY PLUSH • SOFT TOUCH • OPULENT





ATLAS

- YELLOW CODE
- COORDINATING PLAINS
ZEUS & ATLAS
- UPHOLSTERY
- HEAVY COMMERCIAL
- 132,500 MARTINDALE (ATLAS)
- 100,000 WYZENBEEK (ZEUS)
- 100% POLYESTER
- HALO
- FIRE RATED - AS1530.3
- OEKO-TEX
- SOFT TOUCH CHENILLE
- 15 COLOURS



ATLAS



ALABASTER



PARCHMENT



PEARL



BLUSH



CAMEL



OCHRE



AMBER



ESPRESSO



OLIVE



TEAL



SAPPHIRE



RAVEN



ARMOUR



GUNMETAL



MIST



ZEUS



ALABASTER



PARCHMENT



PEARL



BLUSH



CAMEL



OGHRE



AMBER



ESPRESSO



OLIVE



TEAL



SAPPHIRE



RAVEN



ARMOUR



GUNMETAL



MIST



WARWICK



INDULGE YOUR SENSES WITH SOFT, LUSTROUS TEXTURE – ATLAS by Warwick

Rich and soft to the touch, ATLAS is a collection of transitional woven plains that are perfect for creating evocative and glamorous styles. Bringing lustrous and opulent texture for a sophisticated aesthetic, ATLAS will sit beautifully in modern residential and high-traffic commercial spaces alike.

- **DESIGN:** Designed to pair back with one another for an ultimate textural experience, ATLAS features two plain, woven, piece dyed fabrics that bring softness, tactility and a sumptuous feel. ATLAS embodies an inviting chunky texture that is perfect for a cosy look; while ZEUS with its simplistic weave structure and luxe chenille yarn, offers opulence and a plush finish.
- **APPLICATION:** Heavy Commercial with Oeko-Tex certification and an AS1530.3 fire rating, ATLAS's combination of soft and rich texture makes this collection perfect for creating lavish upholstery pieces, comfy cushions, and textured lampshades. With the added benefit of Halo easy-clean characteristics, ATLAS can be applied to a myriad of settings, evoking romantic and comforting moods that are ideal for heritage-inspired or luxurious environments.
- **COLOURWAYS:** With a generous palette of 15 shades, ATLAS offers rich jewel tones for a grandiose style, as well as timeless neutrals that will suit any scheme. Alabaster, Parchment and Pearl are light and airy hues that are perfect for calming, ethereal looks. For a romantic and feminine touch, Blush brings an on-trend shade to the palette. Rich in colour, Sapphire, Teal, and Amber are ideal for creating moody and dramatic settings, while Raven, Espresso and Olive offer a more refined finish. On the cooler side of this collection, Armour, Gunmetal and Mist bring modern tones for complexity and sophistication.
- **RATING:** Oeko-Tex certified and Heavy Commercial with an AS1530.3 fire rating, ATLAS is highly durable and versatile in nature, making it an ideal collection for modern residential and commercial spaces. With Halo easy-clean benefits, ATLAS will bring soft, plush texture and a luxurious feel to a myriad of interiors — perfect for a dramatic, theatrical aesthetic or a luxe, evocative style.



COMMERCIAL



For more information about
Warwick Fabrics call

Australia

Toll free 1300 787 888
www.warwick.com.au

New Zealand

+64 [0] 9 477 3080
www.warwick.co.nz

United Kingdom

+44 [0] 1451 822 383
www.warwick.co.uk



SPECIFICATIONS				FR AS 1530.3 INDEX RESULTS			
DESIGN	USAGE	COMPOSITION	COL CODE AUS/NZ	IGNITABILITY	SPREAD OF FLAME	HEAT EVOLVED	SMOKE DEVELOPED
ATLAS	Heavy Commercial Martindale 132,500	100% Polyester	Y/Y	12	0	2	4
ZEUS	Heavy Commercial Wyzenbeek 100,000	100% Polyester	Y/Y	12	0	2	4

For full test details please contact your Warwick Sales Consultant

Warwick Fabrics © 2023 All rights reserved

LUSTRELL RENDER



MATTE FINISH • ORGANIC TEXTURE • TRANSITIONAL • CONCISE COLOURS





LUSTRELL RENDER

- GREEN CODE
- UPHOLSTERY
- HEAVY COMMERCIAL
- 150,000 MARTINDALE
- 84% PVC, 16% POLYESTER
- LUSTRELL
- ANTI BACTERIAL /
ANTI MICROBIAL
- HEALTHGUARD
- BLEACH CLEANABLE
- FIRE RATED- AS1530.3
- ISO9001 CERTIFIED
- 19 COLOURS



LUSTRELL RENDER



SNOW



CANVAS



NATURAL



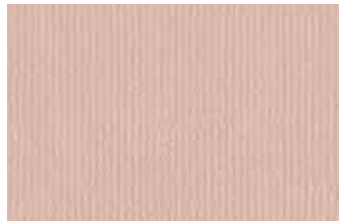
OYSTER



NOUGAT



CORAL



BLUSH



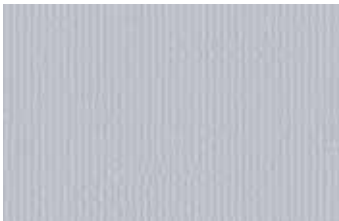
ENDIVE



ARMY



SAGE



BREEZE



ETHER



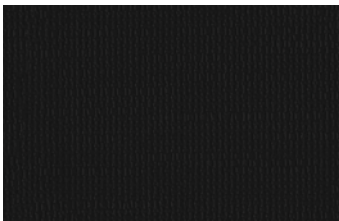
PACIFIC



OCEAN



NAVY



BLACK



EARTH



SLATE



NICKLE



WARWICK



LUSTRELL RENDER

ULTRA DURABLE WITH SOPHISTICATED TEXTURE – LUSTRELL RENDER by Warwick

Where durability meets creativity, LUSTRELL RENDER brings playful pops of colour with a rendered appearance for visual interest in both modern residential and commercial spaces. Offering both high performance and healthcare benefits, LUSTRELL RENDER is a durable vinyl collection with a subtle sheen for a sophisticated touch.

- **DESIGN:** Contemporary with a subtle satin finish, LUSTRELL RENDER is a plain vinyl with an embossed finish for textural appeal. With the added benefit of HealthGuard protection, this collection allows an array of aesthetics to be created where its rendered surface appearance brings extra depth for a stylish look.
- **APPLICATION:** FR tested to AS1530.3 standards with a Heavy Commercial rating, LUSTRELL RENDER is a versatile, durable and bleach cleanable upholstery range that offers extended performance and antibacterial and antimicrobial properties, making it ideal for commercial spaces. With a playful palette, LUSTRELL RENDER can be featured in a myriad of interiors — from a modern hotel, to an urban bar, or a sophisticated restaurant.
- **COLOURWAYS:** From classic neutrals, to alluring pops of colour, LUSTRELL RENDER offers a concise range of shades that will sit beautifully in residential and commercial spaces. Snow, Canvas and Natural are light neutral options, while Nickel, Black and Slate bring darker charcoal and grey alternatives for added complexity. Navy, Ocean and Pacific are popular blue tones with a calming nature, with Ether offering a soothing teal. On-trend greens can be found in Sage and Army where Endive brings an energised citrus. On the warmer and brighter side, Coral and Blush are softer hues that spark inviting moods.
- **RATING:** Heavy Commercial with an AS1530.3 fire rating and certified for quality management system ISO9001, LUSTRELL RENDER is a stylish, embossed vinyl that will suit any space and create endless moods. With the added benefit of HealthGuard treatment and being bleach cleanable, this collection features antibacterial, antimicrobial, and anti-dust mite properties, making this fabric fit for any upholstery purpose and meeting the standards for colourfastness, and abrasion.



HealthGuard



ANTI DUST
MITE



ANTI BACTERIAL
ANTI FUNGAL

For more information about
Warwick Fabrics call

Australia

Toll free 1300 787 888
www.warwick.com.au

New Zealand

+64 (0) 9 477 3080
www.warwick.co.nz

United Kingdom

+44 (0) 1451 822 383
www.warwick.co.uk

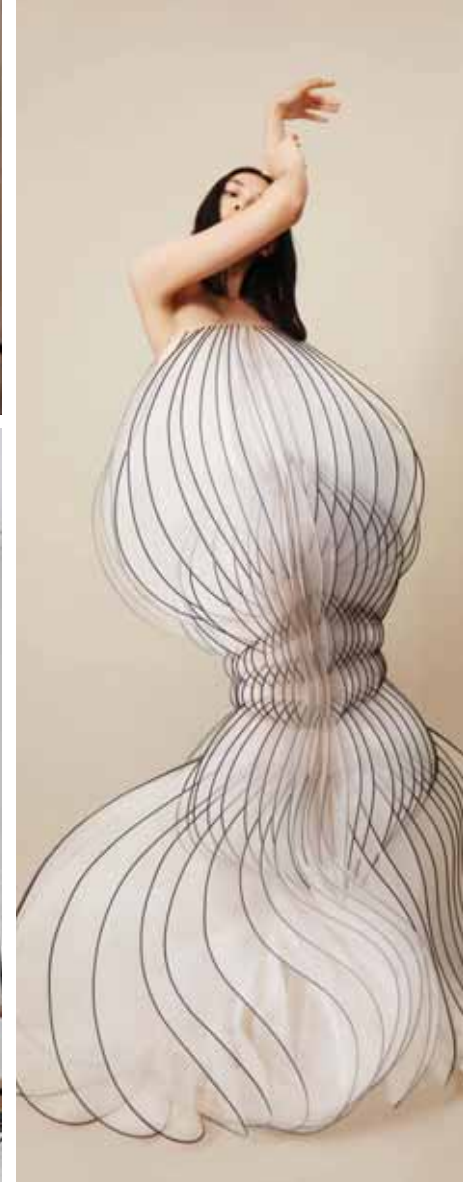
SPECIFICATIONS				FR AS 1530.3 INDEX RESULTS			
DESIGN	USAGE	COMPOSITION	COL CODE AUS/NZ	IGNITABILITY	SPREAD OF FLAME	HEAT EVOLVED	SMOKE DEVELOPED
LUSTRELL RENDER	Heavy Commercial Martindale 150,000	84% PVC, 16% Polyester	G/BL	14	0	1	6

For full test details please contact your Warwick Sales Consultant



Warwick Fabrics © 2023 All rights reserved

CORA



CONTEMPORARY



JACQUARD



TEXTURAL



EVOCATIVE





CORA

- GREEN CODE
- DRAPERY
- 100% POLYESTER
- FIRE RATED - AS1530.2 & AS1530.3
- CONTINUOUS
- 300cm WIDE WIDTH
- SELF-WEIGHTED
- 5 COLOURS



CORA



IVORY



LINEN



STONE



SILVER



CHARCOAL



WARWICK



AN EVOCATIVE SHEER THAT CONNECTS TO NATURE - CORA by Warwick

Embrace nature with CORA. Inspired by biophilic design, CORA is a serene, woven sheer that features an organic wave pattern — perfect for creating nature-inspired environments. Self-weighted with a continuous 300cm wide width, this drapery collection celebrates natural beauty and will bring relaxed, calming, and ethereal moods to an interior.

- **DESIGN:** Contemporary and reversible for an inverted colour option, CORA is a jacquard woven, textured sheer with a visually appealing interlacing wave pattern. Perfect for creating a calming aesthetic, CORA is dry and chalky in finish and embodies a linen-look that is ideal for modern or coastal spaces alike, bringing visual interest and an organic touch and feel.
- **APPLICATION:** From calm, minimal settings, to tranquil, nature-inspired spaces, CORA will bring a relaxed style to a variety of interiors. FR tested to AS1530.2 and AS1530.3 standards, CORA is self-weighted and offers a generous 300cm continuous wide width that is also reversible, making versatile and ideal for creating serene drapery and Roman blinds in any modern space.
- **COLOURWAYS:** In five timeless colourways, CORA offers classic neutrals that will suit an array of interiors. With a tone-on-tone finish, Ivory is the lightest option in this palette, while Linen offers a warmer alternative for a comforting, casual aesthetic. On the cooler side of the spectrum, Stone and Silver bring mineral tones, while Charcoal is compelling and complex, creating alluring surface dimension.
- **RATING:** With an AS1530.2 and AS1530.3 fire rating, this self-weighted and 300cm continuous wide width sheer is perfect for creating spaces of calm, relaxation, and serenity. CORA's timeless palette combined with its raw, textured finish and breezy wave pattern celebrates the beauty of nature, allowing for organic styles to be achieved within modern and coastal interiors.

SPECIFICATIONS			
DESIGN	USAGE	COMPOSITION	COLOUR CODE
CORA	Drapery	100% Polyester	G/G

FR AS/NZS 1530.3		FR AS/NZS 1530.2	
IGNITABILITY	0	FLAMABILITY INDEX	3
SPREAD OF FLAME	0	SPREAD FACTOR	LENGTH: 1 WIDTH: 2
HEAT EVOLVED	0	HEAT FACTOR	LENGTH: 1 WIDTH: 1
SMOKE DEVELOPED	0-1		

For full test details please contact your Warwick Sales Consultant



For more information about
Warwick Fabrics call

Australia

Toll free 1300 787 888
www.warwick.com.au

New Zealand

+64 (0) 9 477 3080
www.warwick.co.nz

United Kingdom

+44 (0) 1451 822 383
www.warwick.co.uk



Warwick Fabrics © 2023 All rights reserved

WHISPER



ETHEREAL DRAPE • CONTINUOUS SHEER • TREND DRIVEN COLOURS





WHISPER

- BLACK CODE
- SHEER DRAPERY
- 67% POLYESTER 27% COTTON
6% LINEN
- FIRE RATED AS1530.3
- 300cm WIDE WIDTH
- CONTINUOUS
- SELF WEIGHTED
- OEKO TEX CERTIFIED
- 9 COLOURS



WHISPER



VANILLA



CREAM



NUDE



LINEN



EUCALYPTUS



CLOUD



SEAL



FOSSIL



NAVY



WARWICK



SOFTEN ANY SPACE WITH AIRY, RELAXED SHEERS – WHISPER by Warwick

Create soft and calming environments with WHISPER. Elegant and soothing, WHISPER is a transitional plain sheer that is perfect for bringing an organic and airy aesthetic to a space. Self-weighted with a continuous 300cm wide width, this collection is stylish in finish and offers a beautiful, natural feel.

- **DESIGN:** Transitional and serene, WHISPER is a plain, woven, piece dyed sheer made from a poly-cotton-linen blend. Featuring self-weighting and a yarn dyed effect, WHISPER embodies a dry finish with a slight texture, bringing a linen look that is ideal for creating light, ethereal drapery in both residential and commercial settings.
- **APPLICATION:** From coastal interiors, to relaxed and casual spaces, WHISPER will bring a calming and elegant feel to any room it features in. Self-weighted with Oeko-Tex certification and an AS1530.3 fire rating, WHISPER offers a generous 300cm continuous wide width, making it ideal for creating breezy drapery or Roman blinds.
- **COLOURWAYS:** Featuring nine timeless hues, WHISPER's colour palette is versatile and will sit beautifully in a myriad of interiors. Vanilla and Cream are classic white options, while Nude and Linen provide a warmer alternative. Eucalyptus and Cloud bring cooler tones, whereas Seal and Fossil are solid greys — perfect for modern spaces and adding dimension. For a deeper, contrasting shade, Navy has charcoal grey undertones that will invite calming moods.
- **RATING:** This self-weighted, 300cm continuous wide width sheer is ideal for those wanting to create a relaxed yet elegant environment with an organic aesthetic. Oeko-Tex certified with an AS1530.3 fire rating, this collection's neutral colourways, soft texture and airy nature will bring a sense of serenity wherever it is featured.



For more information about
Warwick Fabrics call

Australia

Toll free 1300 787 888
www.warwick.com.au

New Zealand

+64 [0] 9 477 3080
www.warwick.co.nz

United Kingdom

+44 [0] 1451 822 383
www.warwick.co.uk

SPECIFICATIONS				FR AS 1530.3 INDEX RESULTS			
DESIGN	USAGE	COMPOSITION	COL CODE AUS/NZ	IGNITABILITY	SPREAD OF FLAME	HEAT EVOLVED	SMOKE DEVELOPED
WHISPER	Drapery	67% Polyester, 27% Cotton, 6% Linen	BK/R1	0	0	0	4

For full test details please contact your Warwick Sales Consultant



Warwick Fabrics © 2023 All rights reserved

TWILIGHT



COLOURED BLOCK OUT • WIDE WIDTH • COMMERCIAL PALLETE • SMART FINISH





TWILIGHT

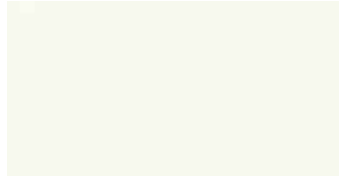
- ORANGE CODE
- BLOCK OUT DRAPERY
- 100% POLYESTER
- FIRE RATED AS1530.3
- OEKO TEX CERTIFIED
- 300cm WIDE WIDTH
- CONTINUOUS
- 4 PASS COATED
- ISO9001 CERTIFIED
- 11 COLOURS



TWILIGHT



PLATINUM



SHELL



CREAM



BONE



DUNE



CHAMPAGNE



STONE



GLACIER



ELEPHANT



ROCK



BASALT



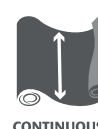
WARWICK



PRACTICAL BLOCK-OUT DRAPERY WITH A MODERN TOUCH – TWILIGHT by Warwick

Transitional and contemporary, TWILIGHT is a plain, 4-pass coated drapery range that is smooth in touch and features practical benefits. With a continuous 300cm wide width, TWILIGHT's versatility allows it to be used as a standalone block-out drapery or utilised as a lining behind a more sheer or decorative drape in both residential and commercial spaces alike.

- **DESIGN:** TWILIGHT is a plain drapery with a 4-pass acrylic coating and a dry, matte finish. Smooth in texture, TWILIGHT brings practicality and a modish feel, making it a superb range for privacy and blocking out sunlight.
- **APPLICATION:** Continuous with a generous 300cm wide width and an AS1530.3 fire rating, TWILIGHT is Oeko-Tex certified and can be used to create sophisticated drapery and Roman blinds with light-blocking properties in both residential and commercial interiors.
- **COLOURWAYS:** Featuring a palette of 11 core neutrals, this collection's colourways were designed to tie back with commercial sheers, making customisation simple and effortless. Platinum, Shell and Cream offer solid white and off-white options, while Bone, Dune and Stone are warmer in tone. For moody greys and darker alternatives, Elephant, Rock and Basalt provide sophistication. Lastly, Glacier and Champagne are driven, fashion colours that are perfect for a modern space.
- **RATING:** With Oeko-Tex certification, TWILIGHT has an AS1530.3 fire rating and features a continuous 300cm wide width with a 4-pass acrylic coating, making this 100% block-out drapery range ideal for commercial applications, as well as contemporary residential interiors. Certified for quality management system ISO9001, this collection can easily be featured in any space, providing light blocking benefits and optimum privacy.



For more information about
Warwick Fabrics call

Australia

Toll free 1300 787 888
www.warwick.com.au

New Zealand

+64 (0) 9 477 3080
www.warwick.co.nz

United Kingdom

+44 (0) 1451 822 383
www.warwick.co.uk

SPECIFICATIONS				FR AS 1530.3 INDEX RESULTS			
DESIGN	USAGE	COMPOSITION	COL CODE AUS/NZ	IGNITABILITY	SPREAD OF FLAME	HEAT EVOLVED	SMOKE DEVELOPED
TWILIGHT	Drapery	100% Polyester	O/O	14	9	2	5

For full test details please contact your Warwick Sales Consultant



Warwick Fabrics © 2023 All rights reserved

TOSHKA



MIX & MATCH PATTERNS • DRY WEAVE & SOFT PLUSH FINISH • TRITAN





TOSHKA

- R5/R6 COLOUR CODES
- COLLECTION BOOK & CONTRACT CARD
- UPHOLSTERY
- HEAVY COMMERCIAL/GENERAL COMMERCIAL
- MARTINDALE 30,000 - 150,000
- HALO
- TRITAN
- ANTI BACTERIAL / ANTI MICROBIAL
- FIRE RATED AS1530.3
- FLURO CHEM
- 68 SKUS
- BACKED IN AUSTRALIA



TOSHKA



ALBANY INDIGO



RENLY ATLANTIC



MARCIE STEEL



AKASHA STEEL



ADAMSON INDIGO



ASMARA INDIGO



ROBINSON ONYX



RENLY GUNMETAL



ROBINSON INDIGO



GARDNER INDIGO



GARDNER ONYX



ADAMSON ONYX



MARCIE INK



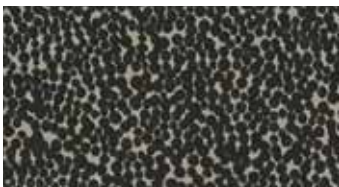
RENLY RAVEN



ALBANY CHARCOAL



ASMARA CHARCOAL



FRYER SHADOW



TOSHKA



ALBANY GLACIER



ASMARA GLACIER



RENLY CINNAMON



AKASHA NATURAL



RENLY CHROME



RENLY PEARL



ASMARA WALNUT



ALBANY STONE



ADAMSON CHAI



ROBINSON CHAI



ALBANY WALNUT



FRYER PORCINI



GARDNER CHAI



RENLY BIRCH



ASMARA STONE



RENLY COCOA



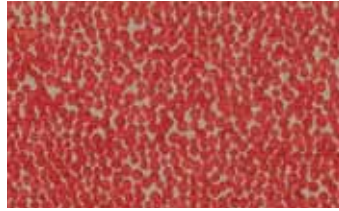
MARCIE NATURAL



TOSHKA



ASMARA MELON



FRYER CORAL



ASMARA SUNSHINE



MARCIE CHARTREUSE



AKASHA MULBERRY



RENLY CORAL



AKASHA CHARTREUSE



RENLY LEMON



ROBINSON PAPRIKA



GARDNER PAPRIKA



RENLY CACTUS



MARCIE FOREST



ADAMSON PAPRIKA



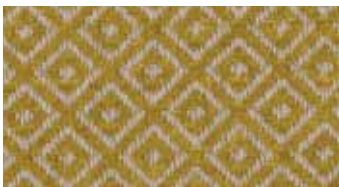
AKASHA SPICE



AKASHA AMAZON



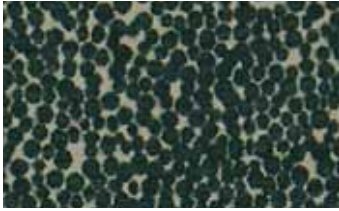
RENLY IVY



ALBANY SUNSHINE



TOSHKA



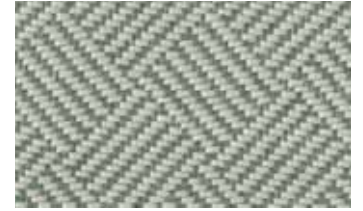
FRYER JUNGLE



ASMARA LAGOON



ALBANY SEAFOAM



RENLY SEAFOAM



ALBANY LAGOON



RENLY LAGOON



FRYER AQUAMARINE



ASMARA SEAFOAM



MARCIE AQUAMARINE



ROBINSON DUCKEGG



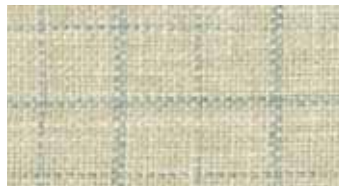
GARDNER CORNFLOWER



ROBINSON CORNFLOWER



AKASHA AQUAMARINE



GARDNER DUCKEGG



ADAMSON CORNFLOWER



AKASHA INK



ADAMSON DUCKEGG



WARWICK



DURABILITY MEETS SOPHISTICATION AND PLAYFUL COLOUR – TOSKA by Warwick

For sophistication with playful pops of colour, TOSKA is a contemporary collection of nine versatile and contemporary patterns that bring timeless style and varying textures to residential and commercial spaces for a modern or urban aesthetic — all with the added benefit of Tritan protection.

- Toshka features the following commercial qualities:
- Strength and durability; Halo Easy Clean; Moisture Barrier; Fire Rated; Tritan Treatment; Antibacterial and Antimicrobial; Anti-Dust Mite; and Bleach Cleanable.
- Australian Made: Tritan backing is applied in Australia.
- Dual Stocked: These ranges are also available stocked without Tritan backing, in ARLINGTON, ABBAS, ACAPULCO, FRASIER, GRASMER, MEHDI, RATHLIN and RHEA.

SPECIFICATIONS				FR AS 1530.3 INDEX RESULTS			
DESIGN	USAGE	COMPOSITION	COL CODE	IGNITABILITY	SPREAD OF FLAME	HEAT EVOLVED	SMOKE DEVELOPED
ADAMSON	Heavy Commercial Martindale 150,000	100% Polyester	R5/R	13	9	5	5
AKASHA	Heavy Commercial Wyzenbeek 100,000	64% Acrylic, 36% Polyester	R6/R	14	9	5	5
ALBANY	Heavy Commercial Wyzenbeek 100,000	58.7% Polyester, 35.3% Acrylic, 6% Viscose	R6/R	13	9	4	5
ASMARA	Heavy Commercial Martindale 59,000	59% Polyester, 35% Acrylic, 6% Viscose	R6/R	13	9	4	6
FRYER	Heavy Commercial Martindale 45,000	49% Polyester, 44% Acrylic, 7% Viscose	R6/R	13	9	5	5
GARDNER	Heavy Commercial Martindale 150,000	100% Polyester	R5/R	13	9	5	5
MARCIE	Heavy Domestic / General Commercial	54% Acrylic, 41% Polyester, 5% Viscose	R6/R	13	9	4	5
RENLY	Heavy Commercial Martindale 68,500	100% Polyester	R5/R	11	9	4	5
ROBINSON	Heavy Commercial Martindale 150,000	100% Polyester	R5/5	13	9	5	5

For full test details please contact your Warwick Sales Consultant



For more information about
Warwick Fabrics call

Australia

Toll free 1300 787 888
www.warwick.com.au

New Zealand

+64 [0] 9 477 3080
www.warwick.co.nz

United Kingdom

+44 [0] 1451 822 383
www.warwick.co.uk



Warwick Fabrics © 2023 All rights reserved



LUSTRELL RENDER CONTRACT CARD

- GREEN CODE
- UPHOLSTERY
- HEAVY COMMERCIAL
- 150,000 MARTINDALE
- 84% PVC, 16% POLYESTER
- LUSTRELL
- ANTI BACTERIAL /
ANTI MICROBIAL
- HEALTHGUARD
- BLEACH CLEANABLE
- FIRE RATED- AS1530.3
- ISO9001 CERTIFIED
- 19 COLOURS



LUSTRELL RENDER



SNOW



CANVAS



NATURAL



OYSTER



NOUGAT



CORAL



BLUSH



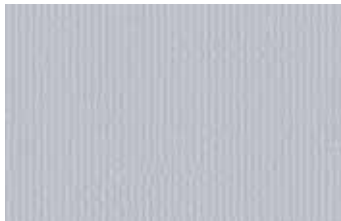
ENDIVE



ARMY



SAGE



BREEZE



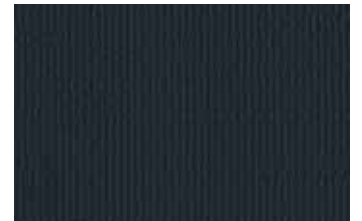
ETHER



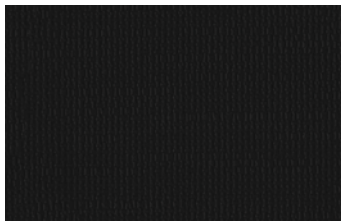
PACIFIC



OCEAN



NAVY



BLACK



EARTH



SLATE



NICKLE





L I N I A

FEBRUARY 2023 RELEASE

MOCHILLA



CHUNKY LINEN • TACTILE • HOPSACK WOVEN • CRAFTED SIMPLICITY





MOCHILLA

- \$95
- UPHOLSTERY
- HEAVY DOMESTIC/
GENERAL COMMERCIAL
- 91% LINEN, 9% NYLON
- OEKO-TEX
- 17 COLOURS



MOCHILLA



SNOW



NATURAL



OYSTER



LINEN



OCHRE



AMBER



NECTAR



BLUSH



ROYAL



DENIM



PETROL



BASIL



GUNMETAL



ESPRESSO



OBSIDIAN



PEWTER



WHISPER



L I N I A



MOCHILLA

TACTILITY MEETS LUXURY FOR AN EXQUISITE AESTHETIC

Exquisite and luxurious, MOCHILLA is a refined, textured plain that will sit beautifully with sophistication and style. Tactile and durable in nature, MOCHILLA is perfect for creating soft, comfortable, and relaxed spaces in both modern residential and commercial interiors alike.

Design: Contemporary yet transitional, MOCHILLA is a dry, hopsack woven plain with chunky yarns for textural surface dimension. Piece dyed with a washed finish and subtle sheen, MOCHILLA celebrates the authentic qualities of natural fibres, making this collection ideal for creating calming spaces with a raw aesthetic.

Application: Oeko-Tex certified, MOCHILLA is a perfect option for those seeking a durable yet stylish plain for either an elegant or casual look. Tactile and versatile, MOCHILLA can be used in domestic and general commercial spaces to create refined sofas and ottomans, as well as textured cushions and lampshades.

Colourways: In 17 colourways, MOCHILLA offers a comprehensive range of core neutrals and bold trend colours to suit any scheme. On the lighter side of the spectrum, Natural, Oyster and Linen are classic neutrals that are modern and inviting, while Amber, Ochre and Nectar are warm autumnal tones that are perfect for enriching a space. For a nature-inspired look, Petrol, Basil and Espresso offer earthy hues, and lastly, Gunmetal, Obsidian and Pewter are core greys that bring depth and complexity to the palette.

Rating: With the added benefit of Oeko-Tex certification, MOCHILLA's enticing chunky texture combined with its timeless, yet playful colour palette allows for a myriad of stylish looks, themes, and moods to be created in both residential and general commercial spaces. Emanating sophistication, MOCHILLA is a collection that offers soft, alluring texture that is timeless and evocative.



DESIGN	USAGE	COMPOSITION
MOCHILLA	Heavy Domestic / General Commercial	91% Linen, 9% Nylon



Australia
Toll free 1300 787 888
www.warwick.com.au

New Zealand
+64 (0) 9 477 3080
www.warwick.co.nz

United Kingdom
+44 (0) 1451 822 383
www.warwick.co.uk

IUTA



EARTHY PALETTE • DRAPERY • TEXTURED • RUSTIC





IUTA

- \$65
- DRAPERY
- 35% POLYESTER,
35% COTTON, 15% LINEN,
15% VISCOSE
- 300cm WIDE WIDTH
- CONTINUOUS
- ISO9001 CERTIFIED
- OEKO-TEX
- 7 COLOURS



IUTA



IVORY



EGGSHELL



PEARL



NECTAR



MINERAL



PEPPER



FROST



L I N I A



ADD A SENSE OF TRANQUILITY WITH CALMING SHEERS

IUTA is a soft, textured sheer that is bound to create calm and tranquil environments with its relaxed nature. Offering a continuous wide width, this sumptuous drapery collection combines the perfect amount of subtle visual interest with a timeless neutral palette that will bring sophisticated style to a myriad of interiors.

Design: Taking from its name — Italian for ‘jute’ — in appearance, IUTA features a large, open weave structure, but has a softness like no other. Yarn dyed, this plain, woven sheer embodies a mélange yarn with a speckle-like texture — creating a rustic rendition of confetti fibres that captures multiple neutral tones in one colour. Dry and textured in finish, IUTA’s raw and flowing characteristics promote a sense of calm and is ideal for a natural, relaxed aesthetic.

Application: For tranquil and ethereal spaces, IUTA will evoke calming moods while blending in effortlessly. With the added benefit of Oeko-Tex certification, IUTA offers a continuous 300cm wide width, making it perfect for creating calming yet sophisticated drapery in any modern interior, especially for large-scale windows.

Colourways: Featuring seven colourways, IUTA offers a timeless selection of trans-seasonal neutrals that will suit an array of spaces all year round. Ivory and Eggshell are core essentials that are ideal for brightening an interior, while Pearl combines flecks of light grey with ivory for a classic midtone finish. With a subtle peach hue, Nectar is a darker neutral that provides an inviting feel. On the deeper side of the palette, Mineral is a warmer, nuanced grey, whereas Frost leans softer and more cool-toned. Lastly, and true to its name, Pepper’s white base embodies flecks of charcoal for a visually appealing salt and pepper finish.

Rating: Oeko-Tex certified with a 300cm continuous wide width, IUTA is a calming, serene sheer that is versatile and perfect for stylish, modern interiors, as well as casual and relaxed spaces. Certified for quality management system ISO9001, this collection’s timeless palette and speckled finish will bring sophistication and a sense of tranquility wherever it is featured.



DESIGN	USAGE	COMPOSITION
IUTA	Drapery	35% Polyester, 35% Cotton, 15% Linen, 15% Viscose



Australia
Toll free 1300 787 888
www.warwick.com.au

New Zealand
+64 (0) 9 477 3080
www.warwick.co.nz

United Kingdom
+44 (0) 1451 822 383
www.warwick.co.uk